

Are you in danger from **RADON** in Muhlenberg County?

Radon is a naturally occurring, radioactive gas.

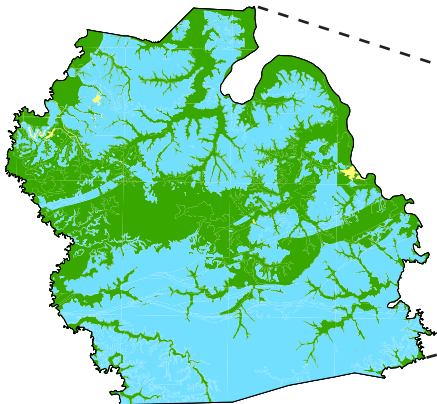
- It cannot be seen, smelled or tasted.
- It may seep into your home from the rocks below.
- It is the second leading cause of lung cancer.

TEST YOUR HOME • KNOW YOUR LEVEL

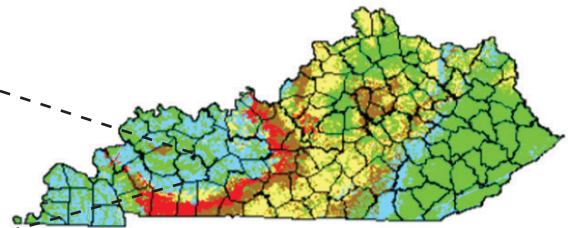
For a radon test kit, contact the Kentucky Radon Program at (502) 564-4856.

Certain types of rock have higher levels of radon:

Radon is a problem in many areas in Kentucky, including Muhlenberg County.



*High radon can occur even in
a least or mild danger area.*



(different colors show different rock types)

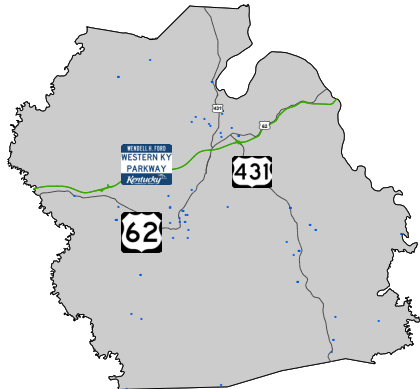


Smoking and radon:

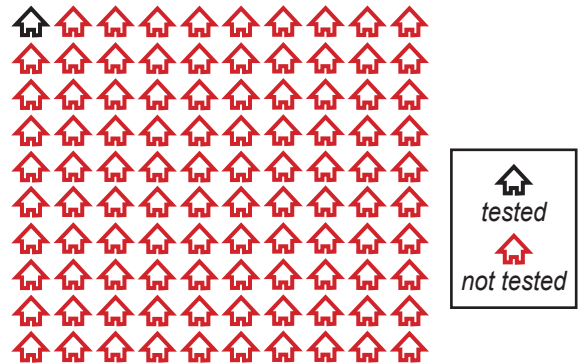
Breathing radon is dangerous,
but it is even *more* harmful when
you also breathe tobacco smoke.



Radon Testing:



• Blue dots show homes already tested for radon.



More homes in Muhlenberg County need to be tested.

To Do List:

- ✓ **TEST** your home for radon.
- ✓ **TALK** with a health care provider about your results.
- ✓ **FIX** your home if the level is high. Call a certified radon professional.
- ✓ **ASK** people to smoke outside.
- ✓ **TELL** your loved ones about the dangers of radon and tobacco smoke.

TEST YOUR HOME • KNOW YOUR LEVEL

For a radon test kit, contact the Kentucky Radon Program at (502) 564-4856.
For more information about the maps, contact BREATHE at (859) 257-7028.