

# Are you in danger from **RADON** in Butler County?

**Radon is a naturally occurring, radioactive gas.**

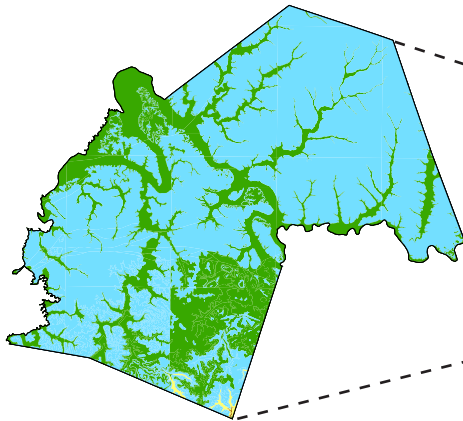
- It cannot be seen, smelled or tasted.
- It may seep into your home from the rocks below.
- It is the second leading cause of lung cancer.

## **TEST YOUR HOME • KNOW YOUR LEVEL**

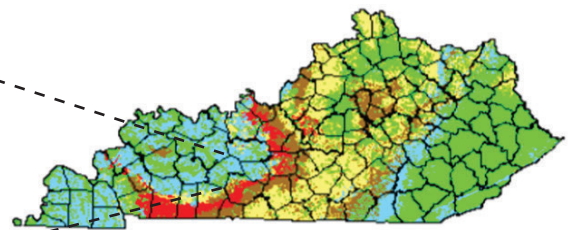
For a radon test kit, contact the Kentucky Radon Program at (502) 564-4856.

### **Certain types of rock have higher levels of radon:**

Radon is a problem in many areas in Kentucky, including Butler County.



*High radon can occur even in  
a least or mild danger area.*



*(different colors show different rock types)*

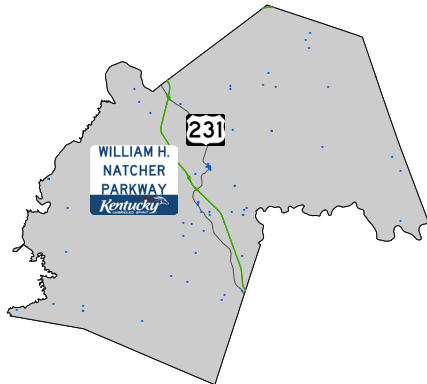


### **Smoking and radon:**

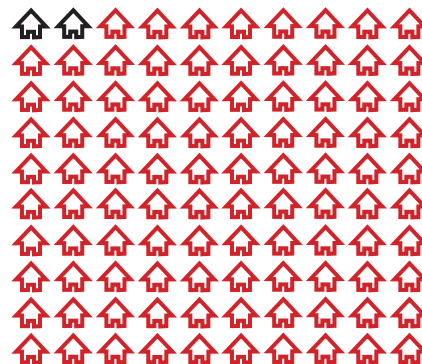
Breathing radon is dangerous,  
but it is even *more* harmful when  
you also breathe tobacco smoke.



# Radon Testing:



• Blue dots show homes already tested for radon.



More homes in Butler County need to be tested.

## To Do List:

- ✓ **TEST** your home for radon.
- ✓ **TALK** with a health care provider about your results.
- ✓ **FIX** your home if the level is high. Call a certified radon professional.
- ✓ **ASK** people to smoke outside.
- ✓ **TELL** your loved ones about the dangers of radon and tobacco smoke.

## TEST YOUR HOME • KNOW YOUR LEVEL

For a radon test kit, contact the Kentucky Radon Program at (502) 564-4856.  
For more information about the maps, contact BREATHE at (859) 257-7028.

**BREATHE**  
Bridging Research Efforts and Advocacy  
Toward Healthy Environments

Radon Policy  
Research Program

**UK** College of  
Nursing

Funding provided by the Kentucky State Radon Program © University of Kentucky BREATHE