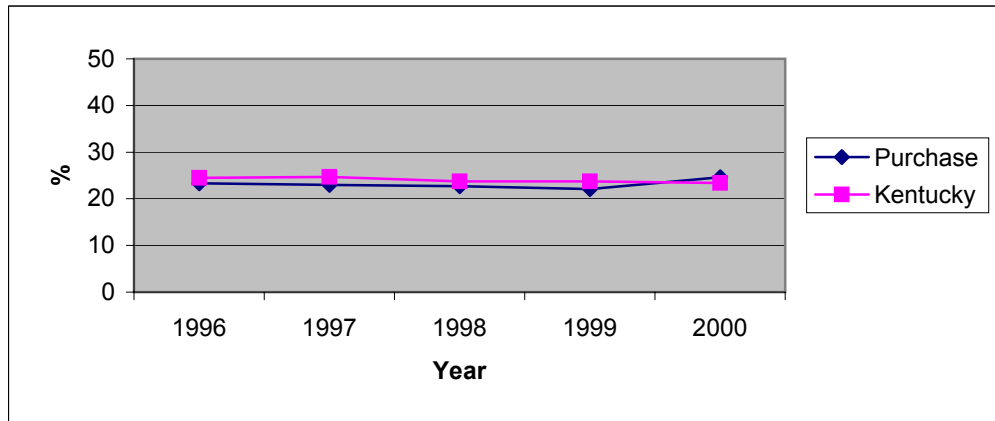


**Kentucky Annual Tobacco Control Plan, 2002-2003
Smoking During Pregnancy 1996-2000
Purchase District Health Department**

County	1996		1997		1998		1999		2000	
	N	%	N	%	N	%	N	%	N	%
Ballard	94	24.5	89	25.8	93	28.0	101	25.7	92	34.8
Calloway	335	23.0	320	21.6	387	26.9	344	24.1	326	27.6
Carlisle	48	29.2	43.0	20.9	62	24.2	71	23.9	70	30
Fulton	101	20.8	93.0	24.7	116	25.9	100	24.0	101	23.8
Graves	482	24.3	469	20.0	514	24.5	480	23.8	503	26.2
Hickman	55	32.7	49	28.6	50	26.0	51	19.6	48	16.7
McCracken	708	21.9	652	24.8	827	18.4	840	19.8	848	21.6
Purchase	1823	23.3	1715	23.0	2049	22.7	1987	22.1	1988	24.6
Kentucky	50264	24.5	50338	24.7	54125	23.7	53216	23.7	55978	23.4



Healthy Kentuckians 2010: Prevention Initiative

Objective 3.4. Reduce cigarette smoking among pregnant women to a prevalence of no more than 17 percent. (1997 Baseline: 25 percent).

Objective 3.5. Increase to at least 50 percent the proportion of pregnant women who abstain from tobacco use beginning early in pregnancy and maintain abstinence for the remainder of their pregnancy, following delivery, and through 6 weeks postpartum.

Sources. Healthy Kentuckians 2010 Spring 2000
Kentucky Vital Statistics Birth File 1996-00