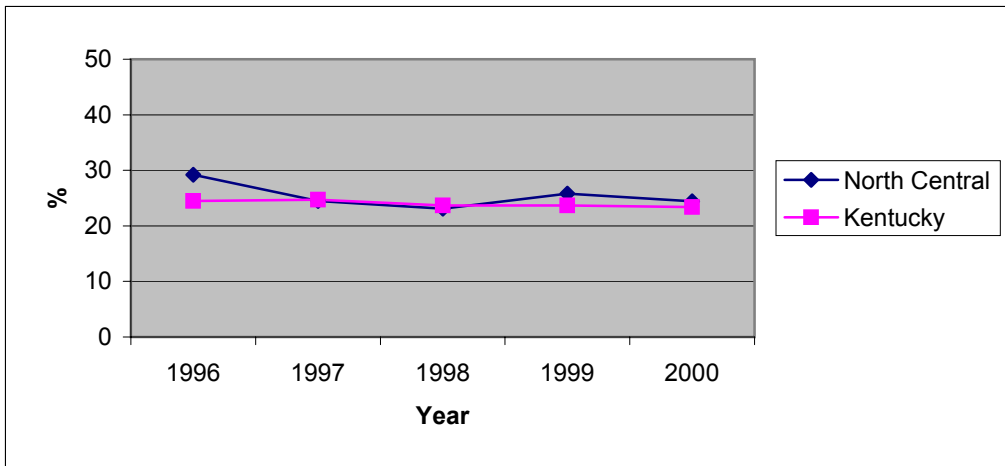


**Kentucky Annual Tobacco Control Plan, 2002-2003
Smoking During Pregnancy 1996-2000
North Central District Health Department**

County	1996		1997		1998		1999		2000	
	N	%	N	%	N	%	N	%	N	%
Henry	190	30.5	175	31.4	208	27.4	196	34.2	237	29.1
Shelby	375	29.6	368	20.7	465	20.4	397	21.7	525	23
Spencer	124	21.8	116	24.1	157	22.3	154	26.0	175	22.3
Trimble	70	37.1	85	27.1	109	27.5	85	25.9	106	23.6
North Central	759	29.2	744	24.5	939	23.1	832	25.8	1043	24.4
Kentucky	50264	24.5	50338	24.7	54125	23.7	53216	23.7	55978	23.4



Healthy Kentuckians 2010: Prevention Initiative

Objective 3.4. Reduce cigarette smoking among pregnant women to a prevalence of no more than 17 percent. (1997 Baseline: 25 percent).

Objective 3.5. Increase to at least 50 percent the proportion of pregnant women who abstain from tobacco use beginning early in pregnancy and maintain abstinence for the remainder of their pregnancy, following delivery, and through 6 weeks postpartum.

Sources. Healthy Kentuckians 2010 Spring 2000
Kentucky Vital Statistics Birth File 1996-00