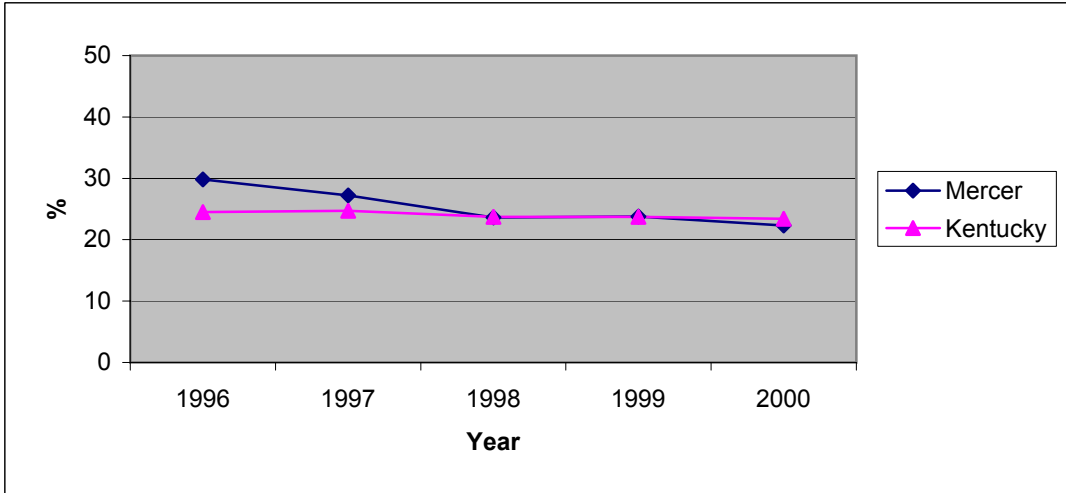


**Kentucky Annual Tobacco Control Plan, 2002-2003  
Smoking During Pregnancy 1996-2000  
Mercer County Health Departments**

County	1996		1997		1998		1999		2000	
	N	%	N	%	N	%	N	%	N	%
Mercer	272	29.8	268	27.2	258	23.6	265	23.8	282	22.3
Kentucky	50264	24.5	50338	24.7	54125	23.7	53216	23.7	55978	23.4



Healthy Kentuckians 2010: Prevention Initiative

Objective 3.4. Reduce cigarette smoking among pregnant women to a prevalence of no more than 17 percent. (1997 Baseline: 25 percent).

Objective 3.5. Increase to at least 50 percent the proportion of pregnant women who abstain from tobacco use beginning early in pregnancy and maintain abstinence for the remainder of their pregnancy, following delivery, and through 6 weeks postpartum.

Sources. Healthy Kentuckians 2010 Spring 2000  
Kentucky Vital Statistics Birth File 1996-00