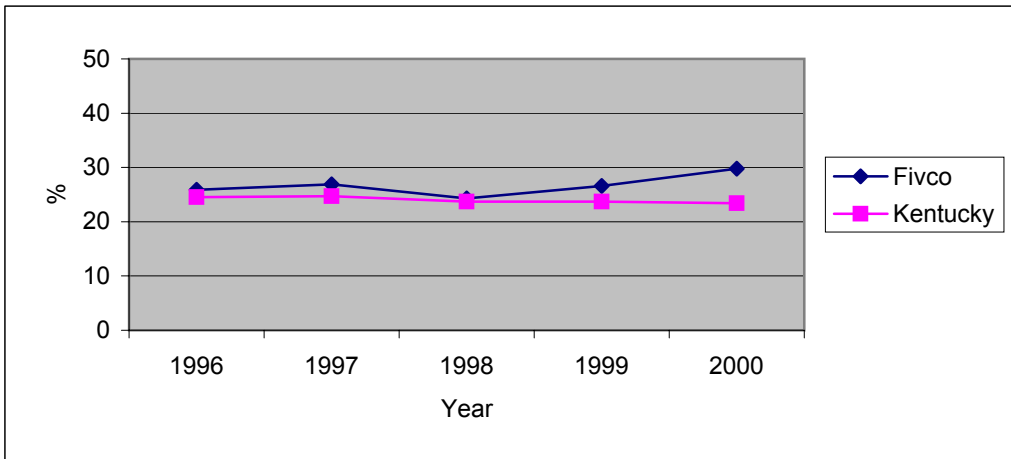


Kentucky Annual Tobacco Control Plan, 2002-200
Smoking During Pregnancy 1996-2000
Fivco District Health Department

County	1996		1997		1998		1999		2000	
	N	%	N	%	N	%	N	%	N	%
Boyd	565	24.1	623	24.7	559	21.8	534	26.6	534	26.8
Lawrence	179	31.8	151	35.8	169	32.5	194	26.8	197	38.1
Fivco	744	25.9	774	26.9	728	24.3	728	26.6	731	29.8
Kentucky	50264	24.5	50338	24.7	54125	23.7	53216	23.7	55978	23.4



Healthy Kentuckians 2010: Prevention Initiative

Objective 3.4. Reduce cigarette smoking among pregnant women to a prevalence of no more than 17 percent. (1997 Baseline: 25 percent).

Objective 3.5. Increase to at least 50 percent the proportion of pregnant women who abstain from tobacco use beginning early in pregnancy and maintain abstinence for the remainder of their pregnancy, following delivery, and through 6 weeks postpartum.

Sources. Healthy Kentuckians 2010 Spring 2000
 Kentucky Vital Statistics Birth File 1996-00