

Are you in danger from **RADON** in Kentucky?

Radon is a naturally occurring, radioactive gas.

- It cannot be seen, smelled or tasted.
- It may seep into your home from the rocks below.
- It is the second leading cause of lung cancer.

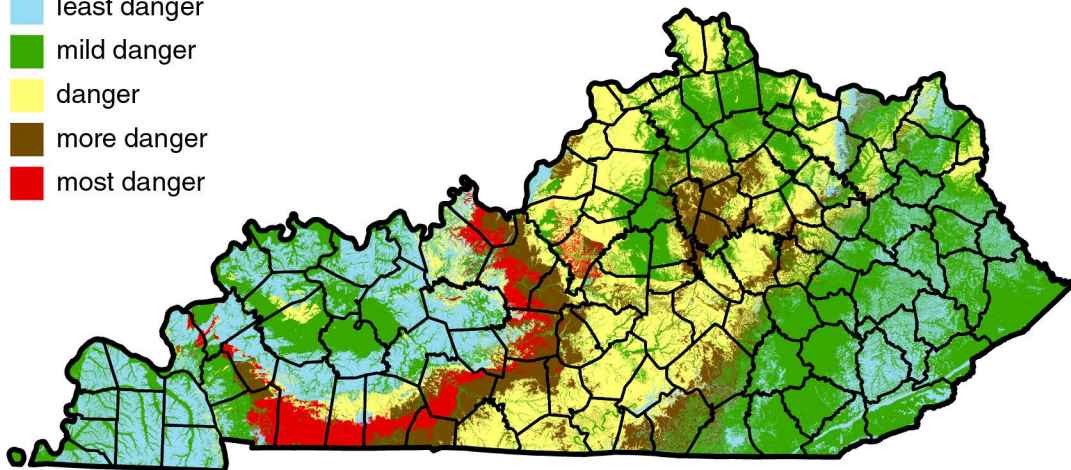
— TEST YOUR HOME • KNOW YOUR LEVEL —

For a radon test kit, contact the Kentucky Radon Program at (502) 564-4856

Certain types of rock have higher levels of radon:

Radon is a problem in many areas in Kentucky.

-  least danger
-  mild danger
-  danger
-  more danger
-  most danger



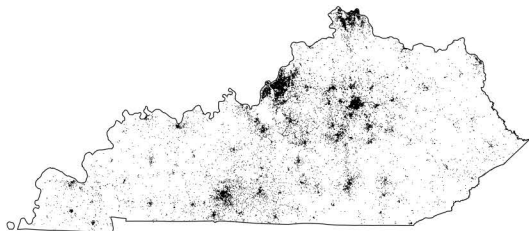
**Different colors show different rock types. High radon can occur even in a least or mild danger area.*

Smoking and radon:

Breathing radon is dangerous for everyone, but it is even *more* harmful when you also breathe tobacco smoke.

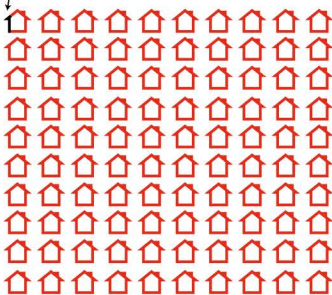


Radon Testing:



• Black dots show homes already tested for radon.

Less than 1% of homes tested



More homes in Kentucky need to be tested.

To Do List:

- ✓ **TEST** your home for radon.
- ✓ **TALK** with a health care provider about your results
- ✓ **FIX** your home if the level is high. Call a certified radon professional.
- ✓ **ASK** people to smoke outside.
- ✓ **TELL** your loved ones about the dangers of radon and tobacco smoke.

TEST YOUR HOME • KNOW YOUR LEVEL

For a radon test kit, contact the Kentucky Radon Program at (502) 564-4856

For more information about maps, contact BREATHE at (859) 257-7028

BREATHE
Bridging Research Efforts and Advocacy
Toward Healthy Environments

Radon Policy
Research Program

UK College of
Nursing

Funding provided by the Kentucky State Radon Program © University of Kentucky BREATHE