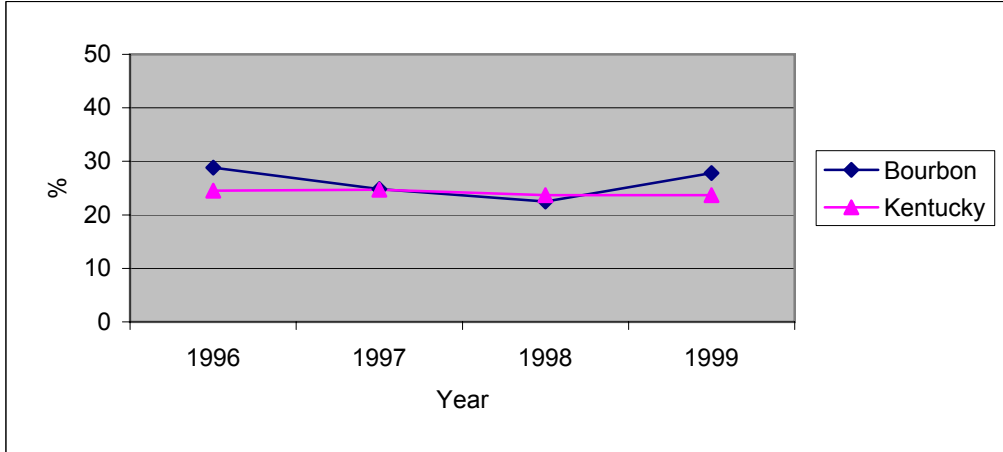


**Kentucky Annual Tobacco Control Plan, 2002-2003
Smoking During Pregnancy 1996-2000
Bourbon County Health Department**

County	1996		1997		1998		1999		2000	
	N	%	N	%	N	%	N	%	N	%
Bourbon	226	28.8	246	24.8	244	22.5	241	27.8	229	25.3
Kentucky	50264	24.5	50338	24.7	54125	23.7	53216	23.7	55978	23.4



Healthy Kentuckians 2010: Prevention Initiative

Objective 3.4. Reduce cigarette smoking among pregnant women to a prevalence of no more than 17 percent. (1997 Baseline: 25 percent).

Objective 3.5. Increase to at least 50 percent the proportion of pregnant women who abstain from tobacco use beginning early in pregnancy and maintain abstinence for the remainder of their pregnancy, following delivery, and through 6 weeks postpartum.

Sources. Healthy Kentuckians 2010 Spring 2000
Kentucky Vital Statistics Birth File 1996-00