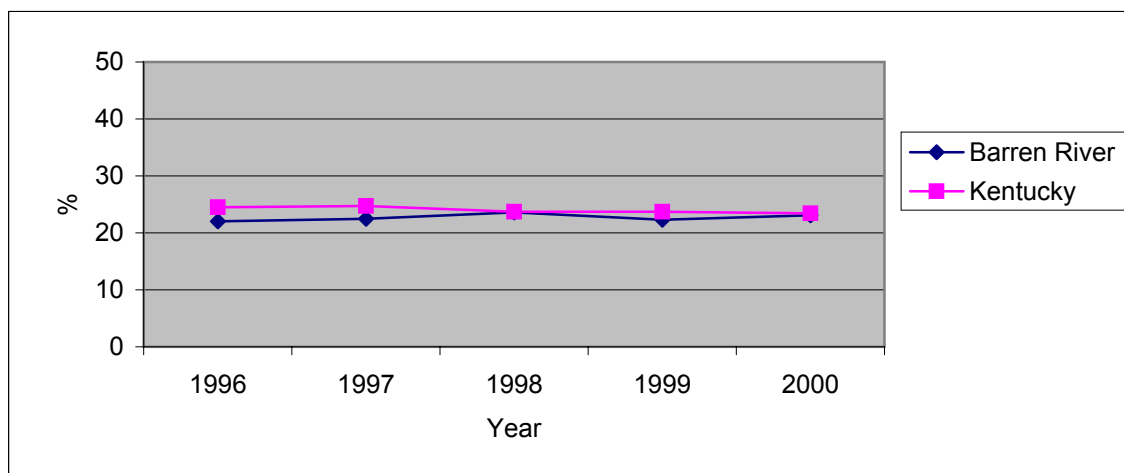


**Kentucky Annual Tobacco Control Plan, 2002-2003  
Smoking During Pregnancy 1996-2000  
Barren River District Health Department**

County	1996		1997		1998		1999		2000	
	N	%	N	%	N	%	N	%	N	%
Barren	478	17.2	453	20.1	453	21.6	465	20.4	496	23.1
Butler	143	29.4	139	25.9	167	24.6	165	27.9	162	21.2
Edmonson	110	32.7	123	25.2	102	28.4	133	34.6	133	28.6
Hart	194	24.7	228	23.2	220	23.6	227	21.1	242	23.6
Logan	371	21.8	339	21.2	341	30.5	350	26	414	28.7
Metcalf	126	26.2	136	22.8	132	25.8	124	22.6	151	19.2
Simpson	203	26.1	217	27.6	218	24.8	248	23	225	28.9
Warren	1187	20.6	1165	21.9	1225	21.5	1232	20	1182	19.5
<b>Barren River</b>	<b>2812</b>	<b>22</b>	<b>2800</b>	<b>22.5</b>	<b>2858</b>	<b>23.6</b>	<b>2944</b>	<b>22.3</b>	<b>3005</b>	<b>23.1</b>
<b>Kentucky</b>	<b>50264</b>	<b>24.5</b>	<b>50338</b>	<b>24.7</b>	<b>54125</b>	<b>23.7</b>	<b>53216</b>	<b>23.7</b>	<b>55978</b>	<b>23.4</b>



Healthy Kentuckians 2010: Prevention Initiative

Objective 3.4. Reduce cigarette smoking among pregnant women to a prevalence of no more than 17 percent. (1997 Baseline: 25 percent).

Objective 3.5. Increase to at least 50 percent the proportion of pregnant women who abstain from tobacco use beginning early in pregnancy and maintain abstinence for the remainder of their pregnancy, following delivery, and through 6 weeks postpartum.

Sources. Healthy Kentuckians 2010 Spring 2000  
Kentucky Vital Statistics Birth File 1996-00