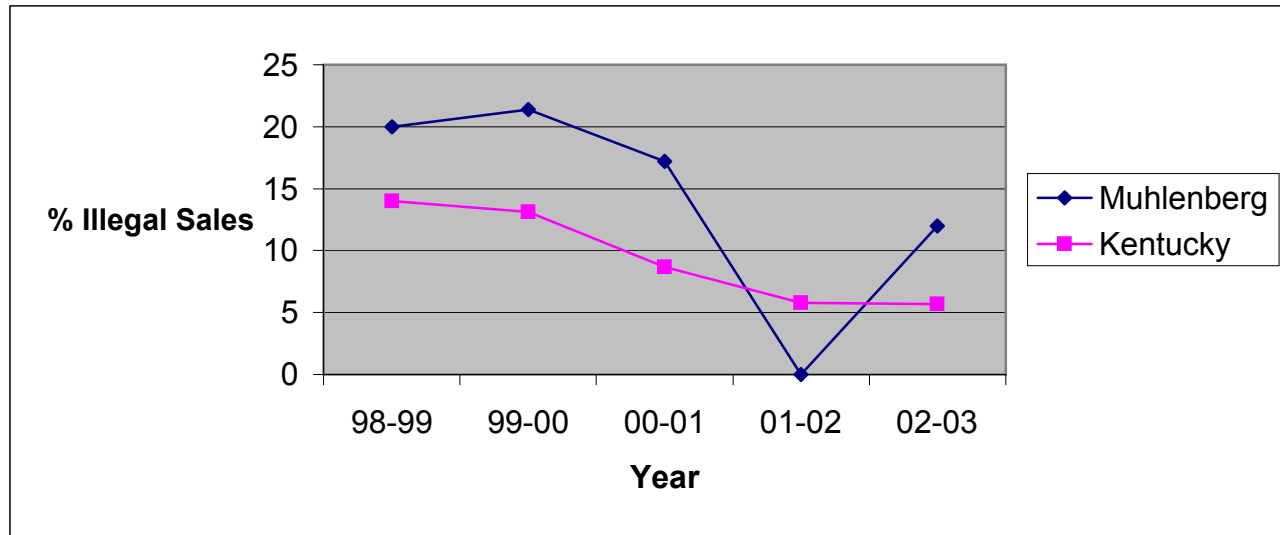


**Illegal Tobacco Sales to Minors
by Health Department Service Area and State
1998-2003**

Muhlenberg County Health Department

| Service Area | 1998-99 | | | 1999-00 | | | 2000-01 | | | 2001-02 | | | 2002-03 | | |
|--------------|----------------------|---------------|------|----------------------|---------------|------|----------------------|---------------|------|----------------------|---------------|-----|----------------------|---------------|------|
| | Attempts to Purchase | Illegal Sales | % | Attempts to Purchase | Illegal Sales | % | Attempts to Purchase | Illegal Sales | % | Attempts to Purchase | Illegal Sales | % | Attempts to Purchase | Illegal Sales | % |
| Muhlenberg | 10 | 2 | 20.0 | 28 | 6 | 21.4 | 29 | 5 | 17.2 | 8 | 0 | 0.0 | 25 | 3 | 12.0 |
| Kentucky | 2633 | 369 | 14.0 | 5853 | 768 | 13.1 | 3361 | 293 | 8.7 | 3446 | 199 | 5.8 | 3117 | 177 | 5.7 |



Source: Alcoholic Beverage Control, Teen Tobacco Enforcement Program

This report was prepared through a contract between the Kentucky Cabinet for Health Services and the University of Kentucky College of Nursing.