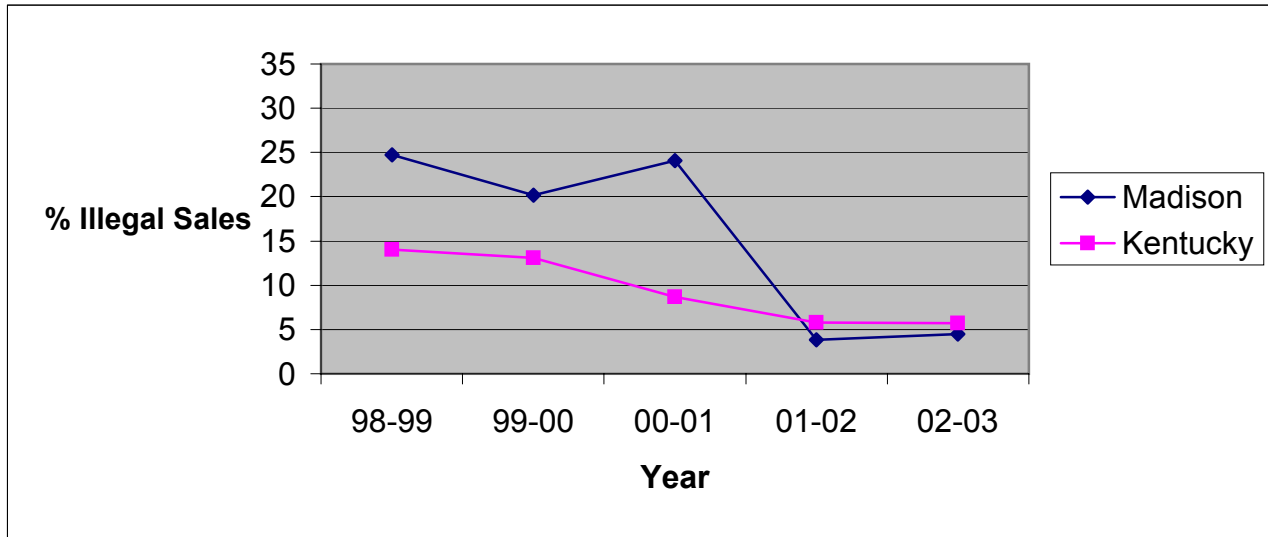


**Illegal Tobacco Sales to Minors
by Health Department Service Area and State
1998-2003**

Madison County Health Department

| Service Area | 1998-99 | | | 1999-00 | | | 2000-01 | | | 2001-02 | | | 2002-03 | | |
|--------------|----------------------|---------------|------|----------------------|---------------|------|----------------------|---------------|------|----------------------|---------------|-----|----------------------|---------------|-----|
| | Attempts to Purchase | Illegal Sales | % | Attempts to Purchase | Illegal Sales | % | Attempts to Purchase | Illegal Sales | % | Attempts to Purchase | Illegal Sales | % | Attempts to Purchase | Illegal Sales | % |
| Madison | 73 | 18 | 24.7 | 188 | 38 | 20.2 | 58 | 14 | 24.1 | 53 | 2 | 3.8 | 89 | 4 | 4.5 |
| Kentucky | 2633 | 369 | 14.0 | 5853 | 768 | 13.1 | 3361 | 293 | 8.7 | 3446 | 199 | 5.8 | 3117 | 177 | 5.7 |



Source: Alcoholic Beverage Control, Teen Tobacco Enforcement Program

This report was prepared through a contract between the Kentucky Cabinet for Health Services and the University of Kentucky College of Nursing.