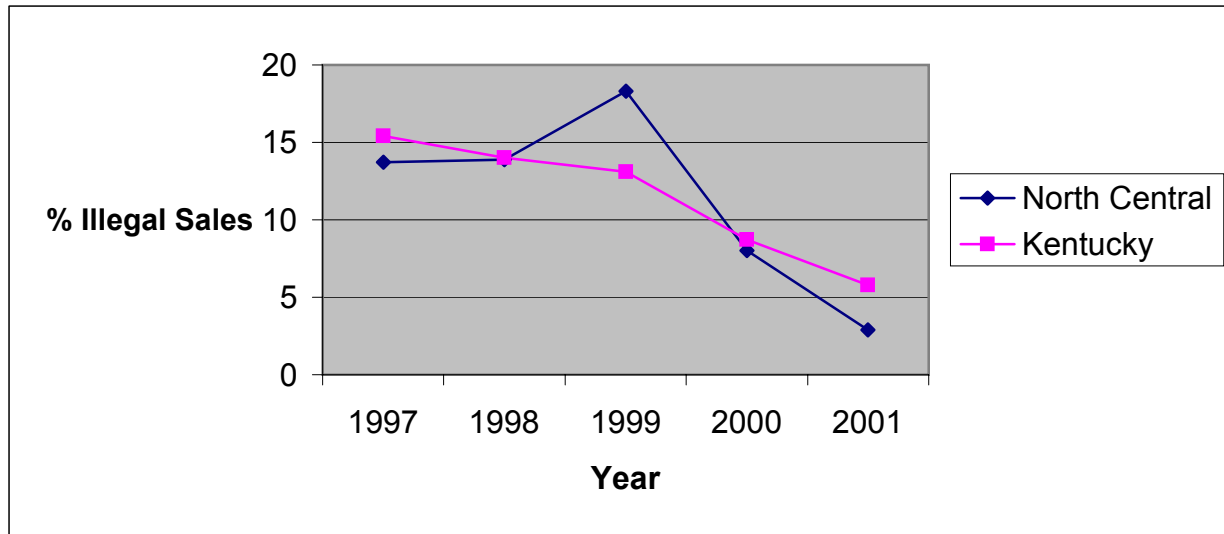


**Illegal Tobacco Sales to Minors  
by Health Department Service Area and State  
1997-2000**

**North Central District Health Department**

| Service Area  | 1997                 |               |      | 1998                 |               |      | 1999                 |               |      | 2000                 |               |      | 2001                 |               |      |
|---------------|----------------------|---------------|------|----------------------|---------------|------|----------------------|---------------|------|----------------------|---------------|------|----------------------|---------------|------|
|               | Attempts to Purchase | Illegal Sales | %    | Attempts to Purchase | Illegal Sales | %    | Attempts to Purchase | Illegal Sales | %    | Attempts to Purchase | Illegal Sales | %    | Attempts to Purchase | Illegal Sales | %    |
| Henry         | 6                    | 0             | 0.0  | 22                   | 3             | 13.6 | 22                   | 5             | 22.7 | 19                   | 1             | 5.3  | 30                   | 0             | 0.0  |
| Shelby        | 21                   | 4             | 19.0 | 12                   | 2             | 16.7 | 37                   | 3             | 8.1  | 46                   | 2             | 4.4  | 39                   | 0             | 0.0  |
| Spencer       | 15                   | 3             | 20.0 | 2                    | 0             | 0.0  | 6                    | 2             | 33.3 | 13                   | 4             | 30.8 | 15                   | 0             | 0.0  |
| Trimble       | 9                    | 0             | 0.0  | 0                    | *             | *    | 6                    | 3             | 50.0 | 10                   | 0             | 0.0  | 20                   | 3             | 15.0 |
| North Central | 51                   | 7             | 13.7 | 36                   | 5             | 13.9 | 71                   | 13            | 18.3 | 88                   | 7             | 8.0  | 104                  | 3             | 2.9  |
| Kentucky      | 2061                 | 318           | 15.4 | 2633                 | 369           | 14.0 | 5853                 | 768           | 13.1 | 3361                 | 293           | 8.7  | 3446                 | 199           | 5.8  |



\* No data reported

Source: Alcoholic Beverage Control, Teen Tobacco Enforcement Program

