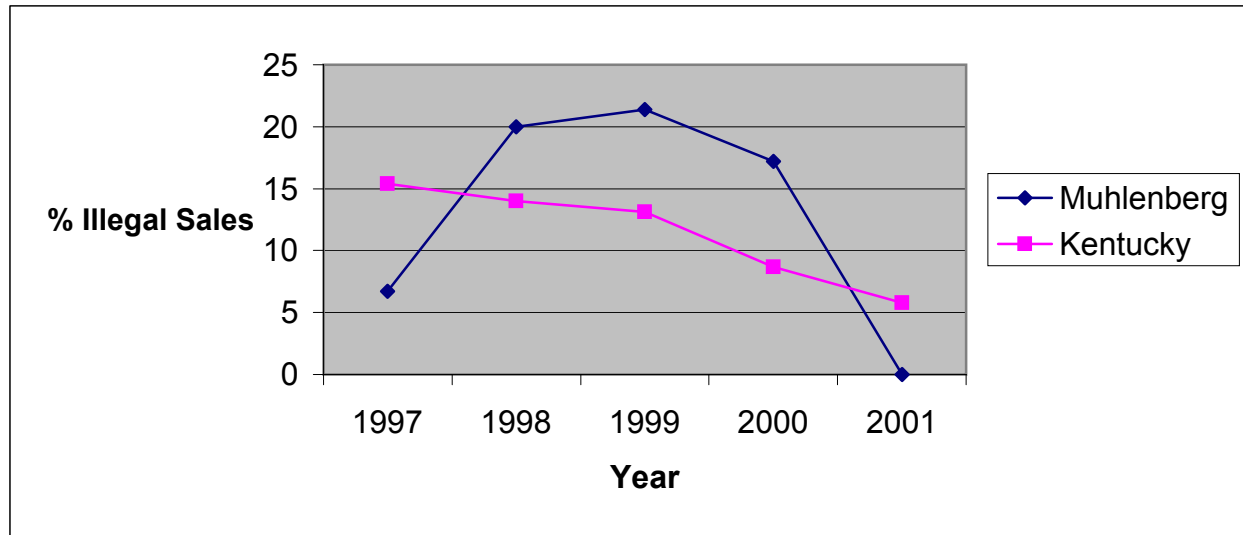


**Illegal Tobacco Sales to Minors
by Health Department Service Area and State
1997-2001**

Muhlenberg County Health Department

| Service Area | 1997 | | | 1998 | | | 1999 | | | 2000 | | | 2001 | | |
|--------------|----------------------|---------------|------|----------------------|---------------|------|----------------------|---------------|------|----------------------|---------------|------|----------------------|---------------|-----|
| | Attempts to Purchase | Illegal Sales | % | Attempts to Purchase | Illegal Sales | % | Attempts to Purchase | Illegal Sales | % | Attempts to Purchase | Illegal Sales | % | Attempts to Purchase | Illegal Sales | % |
| Muhlenberg | 30 | 2 | 6.7 | 10 | 2 | 20.0 | 28 | 6 | 21.4 | 29 | 5 | 17.2 | 8 | 0 | 0.0 |
| Kentucky | 2061 | 318 | 15.4 | 2633 | 369 | 14.0 | 5853 | 768 | 13.1 | 3361 | 293 | 8.7 | 3446 | 199 | 5.8 |



Source: Alcoholic Beverage Control, Teen Tobacco Enforcement Program

