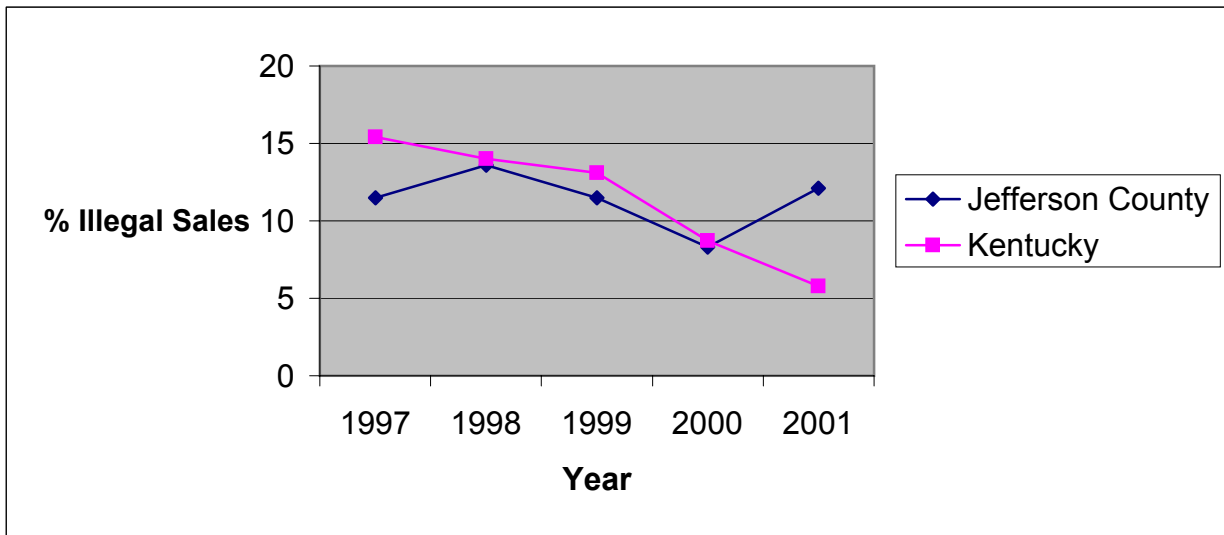


**Illegal Tobacco Sales to Minors
by Health Department Service Area and State
1997-2001**

Jefferson County Health Department

Service Area	1997			1998			1999			2000			2001		
	Attempts to Purchase	Illegal Sales	%	Attempts to Purchase	Illegal Sales	%	Attempts to Purchase	Illegal Sales	%	Attempts to Purchase	Illegal Sales	%	Attempts to Purchase	Illegal Sales	%
Jefferson	295	34	11.5	317	43	13.6	716	82	11.5	384	32	8.3	486	59	12.1
Kentucky	2061	318	15.4	2633	369	14.0	5853	768	13.1	3361	293	8.7	3446	199	5.8



Source: Alcoholic Beverage Control, Teen Tobacco Enforcement Program

