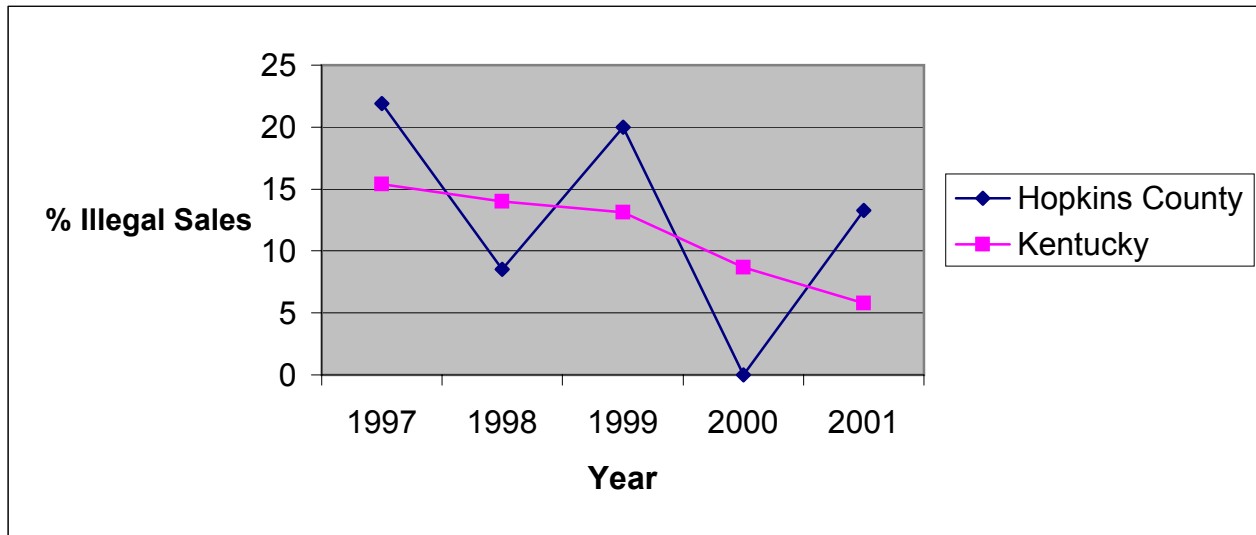


**Illegal Tobacco Sales to Minors
by Health Department Service Area and State
1997-2001**

Hopkins County Health Department

Service Area	1997			1998			1999			2000			2001		
	Attempts to Purchase	Illegal Sales	%	Attempts to Purchase	Illegal Sales	%	Attempts to Purchase	Illegal Sales	%	Attempts to Purchase	Illegal Sales	%	Attempts to Purchase	Illegal Sales	%
Hopkins	32	7	21.9	47	4	8.5	115	23	20.0	26	0	0.0	30	4	13.3
Kentucky	2061	318	15.4	2633	369	14.0	5853	768	13.1	3361	293	8.7	3446	199	5.8



* No data reported

Source: Alcoholic Beverage Control, Teen Tobacco Enforcement Program

