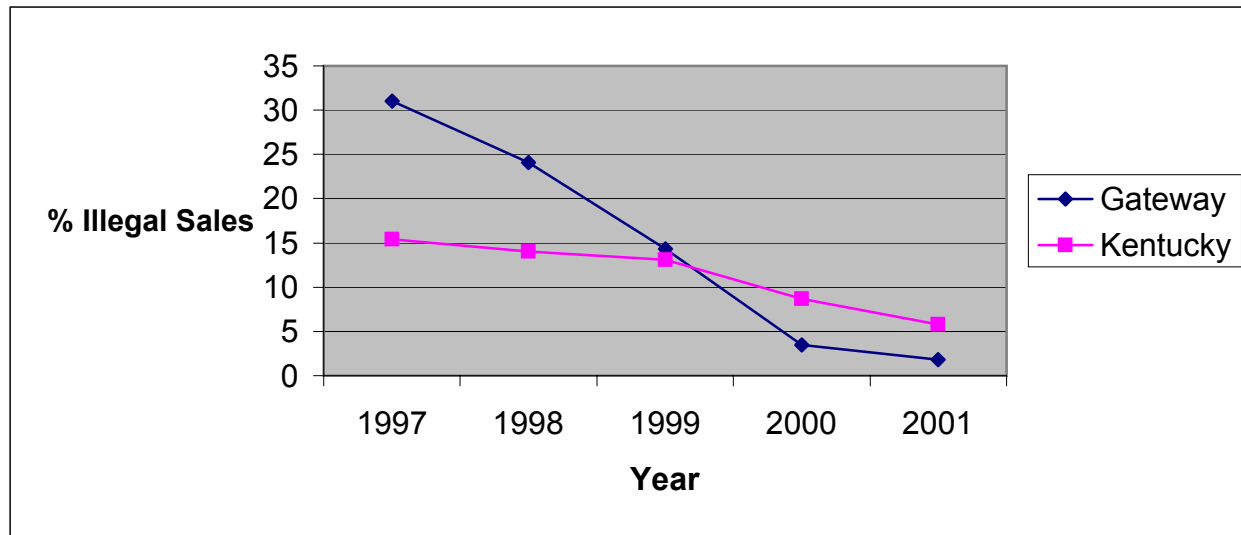


**Illegal Tobacco Sales to Minors
by Health Department Service Area and State
1997-2001**

Gateway District Health Department

| Service Area | 1997 | | | 1998 | | | 1999 | | | 2000 | | | 2001 | | |
|--------------|----------------------|---------------|------|----------------------|---------------|------|----------------------|---------------|------|----------------------|---------------|------|----------------------|---------------|-----|
| | Attempts to Purchase | Illegal Sales | % | Attempts to Purchase | Illegal Sales | % | Attempts to Purchase | Illegal Sales | % | Attempts to Purchase | Illegal Sales | % | Attempts to Purchase | Illegal Sales | % |
| Bath | 0 | * | * | 9 | 3 | 33.3 | 31 | 3 | 9.7 | 45 | 3 | 6.7 | 46 | 2 | 4.3 |
| Menifee | 7 | 3 | 42.9 | 4 | 0 | 0.0 | 9 | 1 | 11.1 | 7 | 1 | 14.3 | 6 | 0 | 0.0 |
| Morgan | 0 | * | * | 5 | 1 | 20.0 | 24 | 3 | 12.5 | 1 | 0 | 0.0 | 11 | 0 | 0.0 |
| Rowan | 22 | 6 | 27.3 | 40 | 10 | 25.0 | 69 | 12 | 17.4 | 61 | 0 | 0.0 | 49 | 0 | 0.0 |
| Gateway | 29 | 9 | 31.0 | 58 | 14 | 24.1 | 133 | 19 | 14.3 | 114 | 4 | 3.5 | 112 | 2 | 1.8 |
| Kentucky | 2061 | 318 | 15.4 | 2633 | 369 | 14.0 | 5853 | 768 | 13.1 | 3361 | 293 | 8.7 | 3446 | 199 | 5.8 |



* No data reported

Source: Alcoholic Beverage Control, Teen Tobacco Enforcement Program

